

MONTHLY MEMBERSHIP PROGRESS REPORT

District 325 I

Results as of: 10/31/2023

GMT:

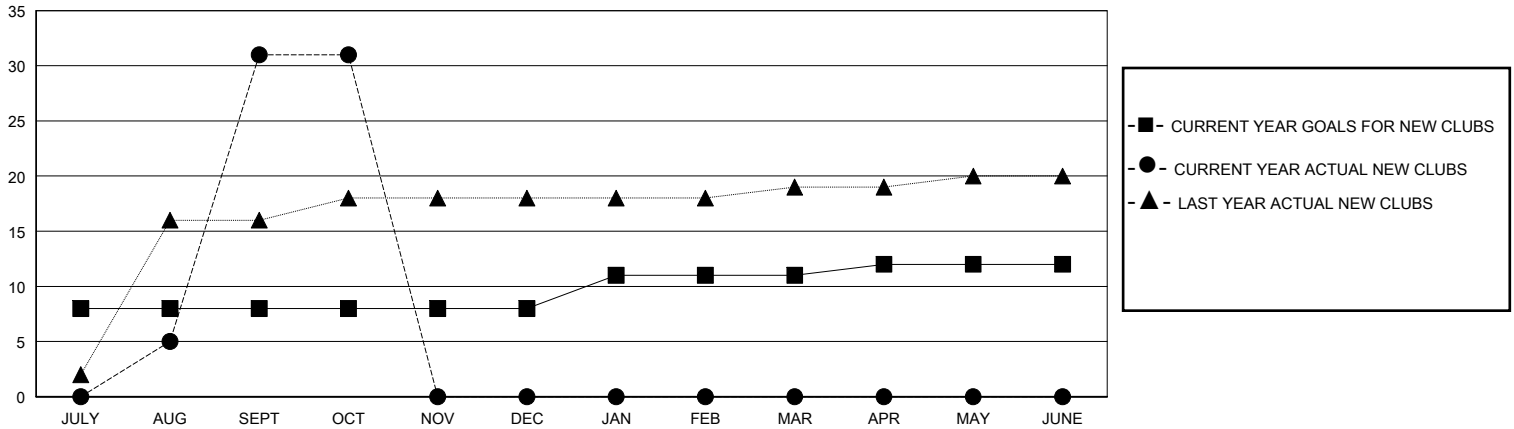
LOCATION NEPAL

GMT CA

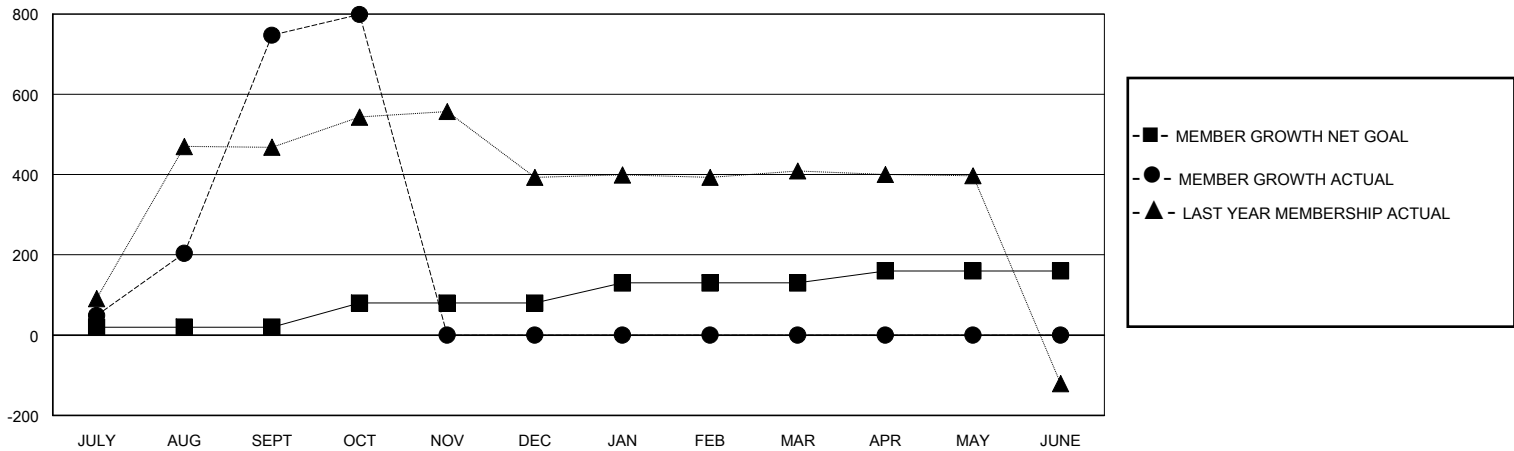
Clubs			
RESULTS FOR 2023-2024			
QUARTER	NEW CLUB GOAL	NEW CLUBS	DROPPED CLUBS
JULY/AUG/SEPT	8	31	3
OCT/NOV/DEC	0	0	0
JAN/FEB/MAR	3	0	0
APR/MAY/JUNE	1	0	0

Members			
RESULTS FOR 2023-2024			
QUARTER	MEMBER GROWTH NET GOAL	MEMBER GROWTH ACTUAL	DROPPED MEMBERS ACTUAL (including transfers)
JULY/AUG/SEPT	20	880	123
OCT/NOV/DEC	60	79	20
JAN/FEB/MAR	50	0	0
APR/MAY/JUNE	30	0	0

GOALS AND ACTUAL NEW CLUBS CUMULATIVE



GOALS AND ACTUAL MEMBERS CUMULATIVE



DROPPED CLUBS: 3	108 CLUBS OF 175 ADDED 1 OR MORE NEW MEMBERS	GENDER DISTRIBUTION
		MALE 2,440 (65.57%)
		FEMALE 1,281 (34.43%)
DROPPED MEMBERS	CLICK HERE FOR CUMULATIVE MEMBERSHIP DATA	TOTAL FAMILY UNIT MEMBERS 3,457
DECEASED 0		FAMILY MEMBERS PAYING HALF DUES 2,541
CLUB CANCELLED 0		
OTHER 143		
TOTAL 143		